

DORON

Model 2200CW Checkweigh Scale



2200CW Features

- 250 Product Database
- Rugged Stainless Steel Construction
- Advanced Communications



Smart Design...
...Better Weighing

Doran 2200CW Checkweigh Scale

Why settle for less - when you can have it all with Doran's new 2200CW Checkweigher! With a built-in 250 product database, versatile communications, powerful control options, and outstanding PC support software, the 2200CW has it all in a simple to use, technologically advanced and extremely rugged package.

Expansive 250 Product ID Database

Store, recall, and weigh with the 2200CW built-in database! This internal database will store up to 250 Checkweigh Tolerances, Tare Weights, Accumulation and Counter totals and a description field by a six digit Product ID. Recalling a product from the database is as simple as pressing the PROD button and entering the product ID.

Adding new products or maintaining existing products are quickly accomplished through the keypad or by using Doran's innovative CheckWay Windows™ compatible software. The data is password protected to ensure that your products are checkweighed properly every time.

Handwritten production records to track weighments or accumulated weight are a thing of the past with the 2200CW. The counter memory stores the number of weighments. Recalling the accumulated weight at the end of a pallet load of product or the end of the shift is as simple as pushing a button.



Versatile Communication Options

Connect with any device or computer using the two standard RS-232 ports, or with the optional Wired Ethernet, Wireless Ethernet, Modbus/TCP, USB, 4-20mA, RS-485 or Fiber Optic. Communicate with flexible and user definable data strings to include standard scale information, product ID, and product description. This allows for an easy interface with barcode printers, data collection systems or other remote devices.

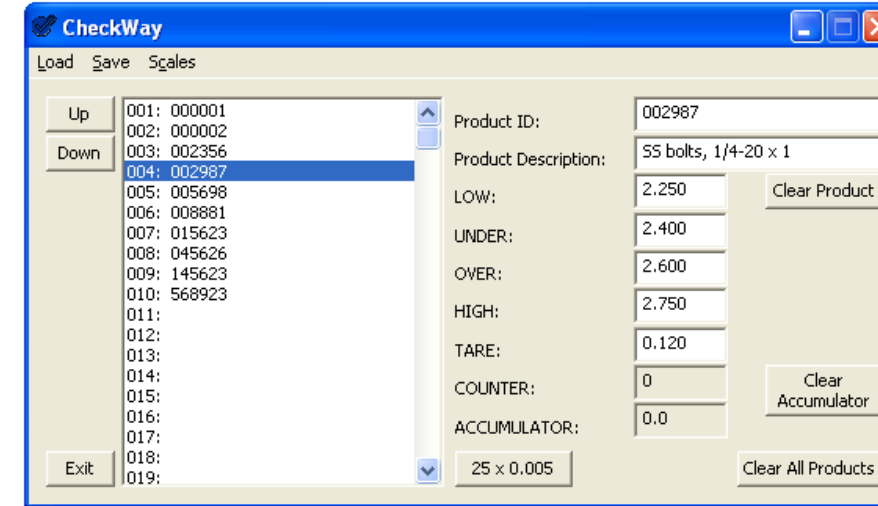


Powerful Control Options

Control your process with eight standard setpoint outputs and two setpoint inputs. The optional relays can be mounted inside the enclosure to provide a turnkey, washdown and compact solution. Use board level outputs and relays to control lights, valves, or any other process control based upon scale weight or checkweigh status.

Control is at Your Fingertips!

With a couple of keystrokes, you can change one of the eight setpoints, access the 250 product database, or display the accumulated weight at the end of a shift. Protect the setpoint, tare and checkweigh parameters with a supervisor password.

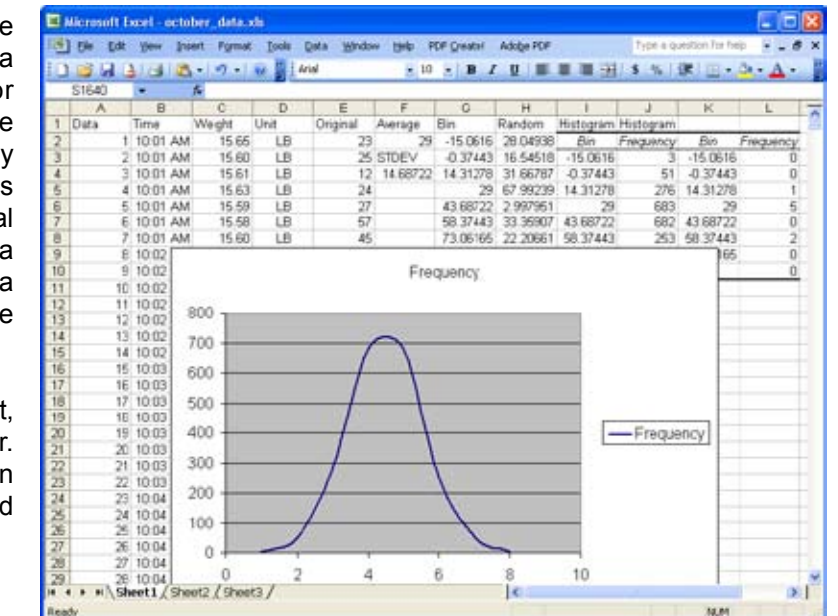


Excelerator Data Collection Software

Now checkweigh data can be moved to where and when decisions need to be made -- at a management level in real-time. Excelerator turns simple weight information into a valuable management tool to analyze and control any process. Collect data from up to 20 scales simultaneously using one PC with Doran's optional Excelerator Data Collection Software. Scale data can be sent from the 2200CW to Excelerator via one of the standard RS-232 ports or through one of the versatile communication options.

Scale data is sent directly into an Excel spreadsheet, using a custom format you define in Excelerator. Once imported into Excel, the real-time data can be manipulated to show Averages, Standard Deviation, and Accumulated Totals.

To learn more about Excelerator go to: <http://www.doranscales.com/exceleratorsoftware>

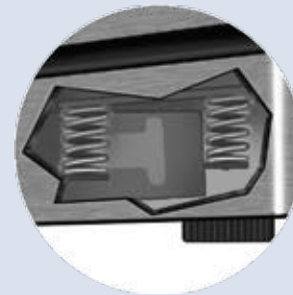


CheckWay PC Software

It's never been easier to upload, download, and maintain checkweigh tolerances than it is now with CheckWay. This optional software is designed for use with the 2200CW internal database through the standard or optional communication choices. Simply enter the product ID, Description field, Checkweigh parameters, and Tare weights and then select the scale or scales to upload to or download from. Scale setup files are saved on the PC, so configuring several scales with identical data is easy and accurate. Programming hundreds of product parameters takes minutes, instead of hours.

Guardian Harsh Environment Protection System

Engineered to thrive in the harshest of working environments, the Model 2200CW features the **Guardian Harsh Environment Protection System**. All the components of this system act as your defense against the damaging effects of shock, water, abuse, and other environmental factors that can cause costly repairs and production downtime.



Guardian Keypad

Shielding the display elements and the scale electronics from water and puncture damage, the Guardian touch panel is four times thicker than the competition. The responsive keypad is bonded to a metal plate and is secured to the inside of the case with adhesive and bolts.

Quad Spring Base

1000% overload protection! Load cell damage caused by shock and overload has been eliminated with the unique "Quad Spring" base design. Shock overload is transferred to the frame of the scale base, protecting the sensitive load cell.



Innovative Gasket Design

Doran's gasket design seals out any moisture, even from a direct hit with a high pressure hose. Combining a rigid metal reinforcement with highly flexible Silicone material results in a gasket that has remarkable sealing characteristics without deforming.

Superior Washdown Safe Construction

Heavy duty 304 Stainless Steel construction and NEMA 4X classification for washdown protection. The case features a unique cover to backplate mating system that prevents overtightening of the bolts or deforming of the backplate - two major causes of leakage and moisture damage.



Specifications

Display:	6 Digit Red LED, 0.56" High
Controls:	TARE, GROSS/NET, ZERO, PRINT, UNITS, ACCUM, CLEAR, PROD ID, SET POINT, OVER, UNDER, ENTER, Decimal Point, and Numeric Keypad 0-9
Indicators:	NET, ZERO, BATT, MOT, OVER, UNDER, and ACCEPT
Units:	lb, oz, kg, g or lb & oz
Power:	115 VAC, 50/60 Hz (230 VAC Optional) Internal Rechargeable Battery (Optional)
Input:	Two programmable inputs
Output:	- Two configurable Bi-directional RS-232 Serial Ports. - Eight digital outputs
Construction:	304 Stainless Steel (16 Gauge)
Dimensions:	6" H x 10" W x 3" D (Indicator)
NTEP:	CC# 06-101 10,000d Class III (Indicator Only)
Canada W&M:	CC# AM-5617 10,000d (Indicator Only)
Warranty:	Two Year parts and labor

Advanced Software Features

- ◆ 250 Product ID Database
- ◆ 3 or 5 Zone Checkweigh
- ◆ Time and Date
- ◆ Grading Scale
- ◆ Peak Hold

Optional Relays

- ◆ Up to 4 internal mechanical or solid state relays.
- ◆ Up to 8 external mechanical or solid state relays.

Optional Communications Interfaces

- ◆ Washdown Ethernet - Wired ◆ 4-20mA
- ◆ Washdown Ethernet - Wireless ◆ RS-485
- ◆ Modbus/TCP ◆ USB 2.0
- ◆ Fiber Optic

Optional Software

- ◆ Excelsior Data Collection Software
- ◆ CheckWay Configuration Software
- ◆ Dimension Setup and Configuration Software

Optional Accessories

- ◆ Light Tower, Audible Alarms, Remote Switches, and Stainless Steel Load Cells

Specifications subject to change without notice.



2200CW Atlas Series Scales

Move the 2200CW Indicator to a higher viewing angle with the included 20" high column or the optional 30" high column. Available with base sizes from 15" x 15" to 24" x 24".

Stainless Steel Model Selection Guide

Precision Resolution Models

Model No.	Base Size	Capacity	
		lb	kg
22002CW	10" x 10"	2 x 0.0005	0.9 x 0.2g
22005CW		5 x 0.001	2.3 x 0.5g
22010CW		10 x 0.002	4.5 x 1g
22025CW		25 x 0.005	11.3 x 2g
22050CW		50 x 0.01	22.7 x 5g
22050CW/12	12" x 12"	50 x 0.01	22.7 x 5g
22100CW/12		100 x 0.02	45 x 10g
22050CW/15	15" x 15"	50 x 0.01	22.7 x 5g
22100CW/15		100 x 0.02	45 x 10g
22200CW/15		200 x 0.05	91 x 20g

Super Precision Resolution Models

Model No.	Base Size	Capacity	
		lb	kg
22002CWSP	10" x 10"	2 x 0.0002	0.9 x 0.1g
22005CWSP		5 x 0.0005	2.3 x 0.2g
22010CWSP		10 x 0.001	4.5 x 0.5g
22020CWSP		20 x 0.002	9.1 x 1g
22050CWSP		50 x 0.005	22.7 x 2g
22050CWSP/12	12" x 12"	50 x 0.005	22.7 x 2g
22100CWSP/12		100 x 0.01	45 x 5g
22050CWSP/15	15" x 15"	50 x 0.005	22.7 x 2g
22100CWSP/15		100 x 0.01	45 x 5g
22200CWSP/15		200 x 0.02	91 x 10g

Larger capacities and base sizes are available.

Excel Series



Doran Scales, Inc.

1315 Paramount Pkwy • Batavia, Illinois 60510
1-800-262-6844 • Fax 630-879-0073

www.doranscales.com



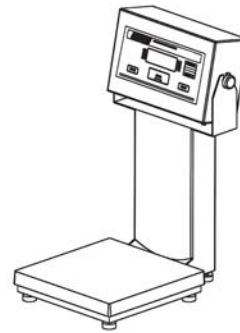
Doran Scales, Inc.

Atlas Series Scales

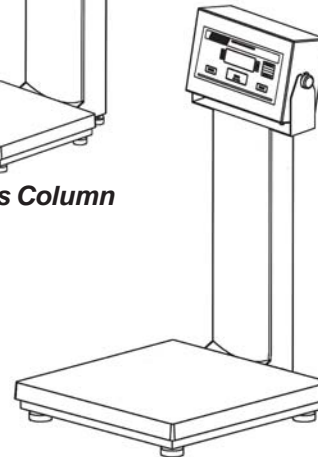
Doran Atlas Scales are rugged, one piece stainless steel scales, offered in 14", 20", or 30" high Atlas columns. Choose any Doran Indicator and one of our 6 base sizes to create a superior washdown scale just right for your task.

Features:

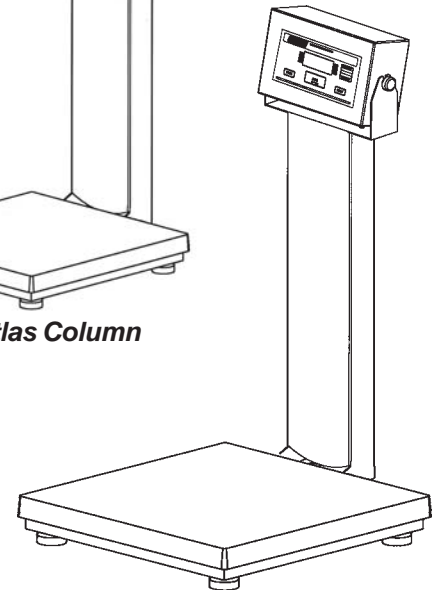
- Atlas Column available in 14", 20", or 30" Heights.
- 304 Stainless Steel Construction
- The open back design of the 6" wide column prevents the collection of water or debris.
- Two adjustable feet provide column support in addition to the four feet on the scale base.
- "Quad Spring" Shock Absorbing Design (Base Sizes 10" x 10" - 18" x 18")
- Legal For Trade (NTEP):
 Base Sizes 10" x 10" to 18" x 18" Class III 5000d
 Base Sizes 18" x 24" & 18" x 24" Class III 3000d



14" Atlas Column



20" Atlas Column



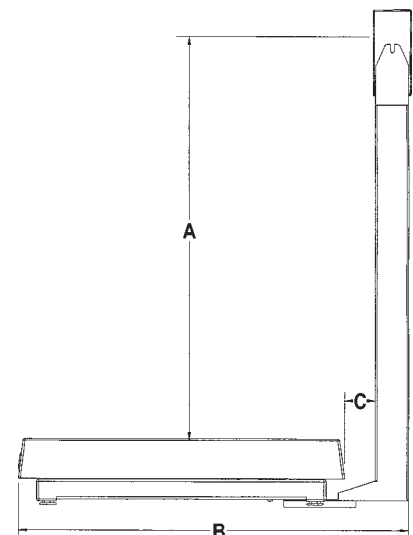
30" Atlas Column

Washdown Safe Indicators

- **8000XLM** - Internal Rechargeable Battery Power
- **7000XLM** - General Purpose Indicator
- **7000M** - Single Pushbutton Operation for Harsh Washdown Applications
- **4300M** - Checkweighing Capability
- **9000XLMIS** - Intrinsically Safe

Atlas Scale Series Dimensions:

Column Height	Base Size	Top of Platter to Readout (A)	Total Scale Depth (B)	Depth From Back Edge of Platter to Front of Column (C)	Capacities Available (lb)
14"	10" x 10"	14.5"	14.25"	1.75"	2, 5, 10, 25 or 50
14"	12" x 12"	13.25"	16.5"	2"	50 or 100
14"	15" x 15"	13"	19.25"	1 - 3/4"	50, 100 or 200
20"	15" x 15"	21.75"	21"	3.5"	50, 100 or 200
20"	18" x 18"	20.5"	24"	3.25"	50, 100, 150 or 300
20"	18" x 24"	20"	23.25"	2.25"	60, 150, 300, 500 or 1000
20"	24" x 24"	20"	29.25"	2.25"	60, 150, 300, 500 or 1000
30"	15" x 15"	31.75"	21"	3.5"	50, 100 or 200
30"	18" x 18"	30.5"	24"	3.25"	50, 100, 150 or 300
30"	18" x 24"	30"	23.25"	2.25"	60, 150, 300, 500 or 1000
30"	24" x 24"	30"	29.25"	2.25"	60, 150, 300, 500 or 1000



Doran Scales, Inc.

1315 Paramount Parkway, Batavia, IL 60510 1-800-262-6844 • Fax (630) 879-0073 • www.doranscales.com